

Watertown (315) 782-0704	 <p>City Electric Company, Inc. www.cityelectricweb.com Corporate Office Syracuse (315) 474-7841</p>	Oswego (315) 343-2739
Ogdensburg (315) 394-0878		Rochester (585) 247-3100
Oneida (315) 361-4149		24 Hour Emergency Number (800) 999-7841



Quick Installation Guide

Philips EnduraLED T8 Tube Specifier Series

Please take the time to read this quick installation guide. The guide contains important information and notes regarding the installation and operation of Philips EnduraLED T8 Tube Specifier Series.

Instructions

- Philips EnduraLED T8 Tube Specifier Series are suitable to replace either T8 fluorescent lamps in fixtures containing standard non-shunted G13 (medium bi-pin) sockets.

Product Specifications

Product Description	Product Number	LED tube Dimension Length (inches)
EnduraLED T8 Tube GA 24 inch 11W 835 G13 Specifier	41868-1	24"
EnduraLED T8 Tube GA 24 inch 11W 840 G13 Specifier	41871-5	24"
EnduraLED T8 Tube GA 48 inch 22W 835 G13 Specifier	41869-9	48"
EnduraLED T8 Tube GA 48 inch 22W 840 G13 Specifier	41872-3	48"

Retrofit Kits Model No.	LED Tube Model No.	Input Voltage, Vac	Input Frequency, HZ	Input Wattage, W	Input Current, mA
11G13T8-GA	11G13T8-GA	100~277	50-60	11	120/52
22G13T8-GA	22G13T8-GA	100~277	50-60	22	240/100

During retrofit, rewiring is a MUST, please follow the installation steps on the back page.



Retrofit Instructions

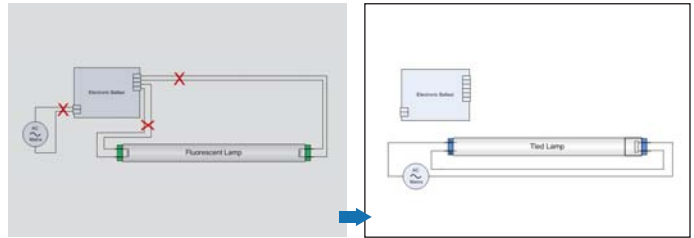
1. Remove diffuser (if applicable) and fluorescent lamp.
2. Open\Remove Wiring Compartment Cover.
3. Cut off all wires which connected to ballast.
4. Connect one wire from each lampholder together.
5. Connect one wire from the lampholder to branch circuit L (Live wire) and the other wire at the opposite end to the Branch Circuit N (Neutral wire).
6. Close up wiring compartment.
7. Install TL LED tube.
8. Switch on power.
9. Repeat steps 3 to 5 for each additional bulb\ballast based on illustration below.

Luminaire Description

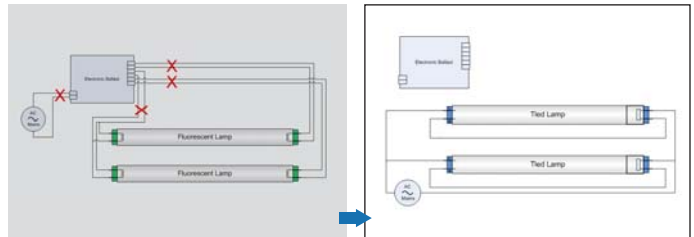
- Philips TL LED tube is suitable to be installed in T8 standard luminaires.
- Philips TL LED tubes can't retrofit original luminaires which use remote Starter.
- Ensure all parts and accessories are in the package, included instruction, filed-applied label and tubular LED lamp, the additional wire connector and No. 18 AWG wiring maybe provided.
- Philips TL LED tubes are intended to retrofit maximum four lamps, UL Listed surface mount, or type IC or non-IC recessed mount fluorescent luminaires with diffuser that use straight tubular lamps. These products intended to be used in dry or damp locations only.
- Please make sure the existed luminaire dimension is larger than dimension described in below table.

Philips EnduraLED tube intended to retrofit Max. Number tubes in original luminaire	Luminaire Dimension with Max. No. of tubes Length X Width X Height (cm)
Max. 4pcs LED tubes(22G13T8_GA) can be operated in a luminaire with or without diffuser	120 x 60 x 8
Max. 4pcs LED tubes(11G13T8_GA) can be operated in a luminaire with or without diffuser	60 x 60 x 8

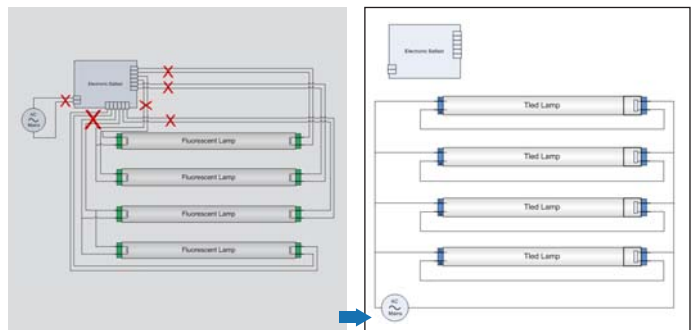
• Retrofit Luminaire with One Lamp



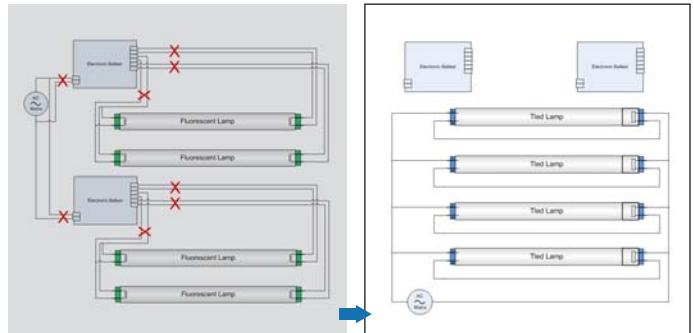
• Retrofit Luminaire with Two Lamps and one ballast



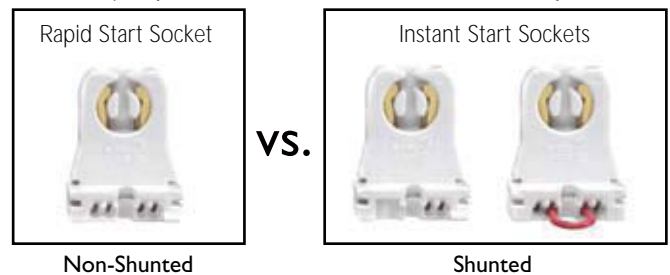
• Retrofit Luminaire with Three/Four Lamps and one ballast



• Retrofit Luminaire with Three/Four Lamps and two ballasts



Sockets (Philips TL LED is suitable for non-shunted Rapid start Sockets)



Watertown (315) 782-0704 Ogdensburg (315) 394-0878 Oneida (315) 361-4149	City Electric Company, Inc. www.cityelectricweb.com Corporate Office Syracuse (315) 474-7841	Oswego (315) 343-2739 Rochester (585) 247-3100 24 Hour Emergency Number (800) 999-7841
--	---	--

PHILIPS
sense and simplicity

WARNINGS, CAUTIONS AND OPERATING INSTRUCTIONS

WARNING:

"THIS PRODUCT MUST BE INSTALLED IN ACCORDANCE WITH THE APPLICABLE INSTALLATION CODE BY A PERSON FAMILIAR WITH THE CONSTRUCTION AND OPERATION OF THE PRODUCT AND THE HAZARDS INVOLVED."

1. Risk of fire or electric shock. The electrical rating of these products are 100~277V, the installer must determine whether they have 100~277V at the luminaire before installation.
2. Risk of fire or electric shock. Luminaires wiring, ballasts, or other electrical parts may be damaged when installing of reflector kit hardware. Check for enclosed wiring and components.
3. Risk of fire or electric shock. Reflector kit installation requires knowledge of fluorescent lighting luminaires electrical systems. If not qualified, do not attempt installation. Contact a qualified electrician.
4. Risk of fire or electric shock. Install this kit only in the luminaires that has the construction features and dimensions shown in the photographs and/or drawings.
5. To prevent wiring damage or abrasion, do not expose wiring to edges of sheet metal or other sharp objects.
6. Do not make or alter any open holes in an enclosure of wiring or electrical components during kit installation

DANGER-RISK OF SHOCK-DISCONNECT POWER BEFORE INSTALLATION.

WARNING - Risk of fire or electric shock. Install this kit only in the luminaires that have the construction features and dimensions shown in the photographs and/or drawings.

WARNING: To avoid potential fire or shock hazard, do not use this retrofit kit in luminaires employing shunted bi-pin lampholders. Note: Shunted lamp holders are found only in fluorescent luminaires with Instant-Start ballasts. Instant-start ballasts can be identified by the words "Instant Start" or "I.S." marked on the ballast. This designation may be in the form of a statement pertaining to the ballast itself, or may be combined with the marking for the lamps with which the ballast is intended to be used, for example F40T12/IS. For more information, contact the LED luminaire retrofit kit manufacturer.

Installers should not disconnect existing wires from lampholder terminals to make new connections at lampholder terminals. Instead installers should cut existing lampholder leads away from the lampholder and make new electrical connections to lampholder lead wires by employing applicable connectors.

SUITABLE FOR DRY OR DAMP LOCATIONS.

DO NOT USE WITH DIMMERS

THIS DEVICE IS NOT INTENDED FOR USE WITH EMERGENCY EXITS.

Lamps must be operated within an ambient fixture temperature of -22F (-30c) and 113F (45c) to comply with all safety and warranty regulations.

Watertown (315) 782-0704	City Electric Company, Inc.  www.cityelectricweb.com	Oswego (315) 343-2739
Ogdensburg (315) 394-0878	Corporate Office Syracuse (315) 474-7841	Rochester (585) 247-3100
Oneida (315) 361-4149		24 Hour Emergency Number (800) 999-7841



© 2011 Philips Lighting Company. A Division of
Philips Electronics North America Corporation.
All rights reserved.
Printed in USA 4/11

www.philips.com

Philips Lighting Company
200 Franklin Square Drive
Somerset, NJ 08873
1-800-555-0050

Philips Lighting
281 Hillmount Road
Markham, Ontario
Canada L6C 2S3
1-800-555-0050
A Division of Philips Electronics Ltd.